

# Transforming mental health care

COMPASS Pathways plc  
August 2021





# Disclaimer

**Cautionary Note Regarding Forward-Looking Statements** This presentation includes express and implied “forward-looking statements.” In some cases, you can identify forward-looking statements by terms such as “anticipate,” “believe,” “contemplate,” “continue,” “could,” “estimate,” “expect,” “intend,” “may,” “might,” “plan,” “potential,” “predict,” “project,” “should,” “target,” “will,” “would,” or the negative of these terms, and similar expressions intended to identify forward-looking statements. However, not all forward-looking statements contain these identifying words. These statements may relate to our strategic plans or objectives, revenues or earnings projections, or other financial items. By their nature, these statements are subject to numerous uncertainties, including factors beyond our control, that could cause actual results, performance or achievement to differ materially and adversely from those anticipated or implied in the statements. You should not rely upon forward-looking statements as predictions of future events. Although our management believes that the expectations reflected in our statements are reasonable, we cannot guarantee that the future results, levels of activity, performance or events and circumstances described in the forward-looking statements will be achieved or occur. Moreover, neither we, nor any other person, assumes responsibility for the accuracy and completeness of these statements. You are cautioned not to place undue reliance on these forward-looking statements, which speak only as of the date such statements are made and should not be construed as statements of fact. We undertake no obligation to update these forward-looking statements to reflect events or circumstances after the date hereof, or to reflect the occurrence of unanticipated events.

**Market & Industry Data** Projections, estimates, industry data and information contained in this presentation, including the Company’s general expectations and market position and market opportunity, are based on information from third-party sources and management estimates. Although the Company believes that its third party-sources are reliable, the Company cannot guarantee the accuracy or completeness of its sources. The Company’s estimates are derived from third-party sources, publicly available information, the Company’s knowledge of its industry and assumptions based on such information and knowledge. The Company’s estimates have not been verified by any independent source. All of the projections, estimates, market data and industry information used in this presentation involve a number of assumptions and limitations, and you are cautioned not to give undue weight to such information. In addition, projections, estimates and assumptions relating to the Company’s and its industry’s future performance are necessarily subject to a high degree of uncertainty and risk due to a variety of factors, including, but not limited to, those described above, that could cause future performance to differ materially from the Company’s expressed projections, estimates and assumptions or those provided by third parties. This presentation shall not constitute an offer to sell or the solicitation of an offer to buy securities, nor shall there be any sale of securities in any state or jurisdiction in which such offer, solicitation or sale would be unlawful prior to registration or qualification under the securities laws of any such state or jurisdiction.

For additional disclosure regarding these and other risks faced by the Company, see the disclosure contained in the Company’s public filings with the US Securities and Exchange Commission (the “SEC”). Except as required by applicable law, we do not plan to publicly update or revise any forward-looking statements contained herein, whether as a result of any new information, future events, changed circumstances or otherwise. Although we believe the expectations reflected in such forward-looking statements are reasonable, we can give no assurance that such expectations will prove to be correct. Accordingly, readers are cautioned not to place undue reliance on these forward-looking statements. No representations or warranties (expressed or implied) are made about the accuracy of any such forward-looking statements.



A collage of five vertical portrait strips of diverse people. From left to right: a man with a beard and mustache, a young woman with long dark hair, a young woman with dark skin and short hair, an older man with glasses and wrinkles, and a young woman with long dark hair. The text "Everyone has a STORY" is overlaid in the center.

Everyone has a  
STORY



# COMPASS's broad expertise



**George Goldsmith**  
Chairman, CEO and Co-founder



**Ekaterina Malievskaia, MD**  
Chief Innovation Officer, Co-founder



**Lars Wilde**  
President, Chief Business Officer, Co-founder



**Piers Morgan**  
Chief Financial Officer



**Guy Goodwin, DPhil**  
Chief Medical Officer



**Marco Mohwinckel**  
Chief Commercial Officer



**Trevor Mill**  
Chief Development Officer



**Nate Poulsen**  
General Counsel and Chief Legal Officer



**Tracy Cheung**  
Chief Communications Officer



**Anne Benedict**  
Chief People Officer



**Sue Stansfield, PhD**  
Senior Vice President, Clinical Operations



**Stephen Schultz**  
Senior Vice President, Investor Relations



**Greg Ryslik, PhD**  
Senior Vice President, Data Science,  
Machine Learning and Digital Health Research



**Danielle Schlosser, PhD**  
Senior Vice President, Clinical Innovation



**Gary Gilmore, DPhil**  
Vice President, Preclinical Research



**Steven Levine, MD**  
Vice President, Patient Access



**Roberta Tucker**  
Head of Quality, GxP



**Stephen Wright, MD**  
Senior Scientific Advisor





# We are a mental health care company



## Dedicated to accelerating patient access to evidence-based innovation in mental health care

- Significant unmet need: 100m people<sup>1</sup> with treatment-resistant depression (TRD)
- Committed to transforming the patient experience



## Developing COMP360 psilocybin therapy for TRD

- COMP360 designated a FDA Breakthrough Therapy for TRD
- Completed Phase I healthy volunteers trial, largest psilocybin therapy clinical trial to date
- Phase IIb ongoing, with 233 patients expected to have completed the trial by late 2021
- Planned expansion into additional indications



## Driven by science and rigour

- COMP360 differentiated mechanism of action, activating the 5HT<sub>2A</sub> receptor<sup>2</sup>
- Signals from academic studies have shown that psilocybin therapy can improve outcomes for patients
- IP strategy combining patent protection with regulatory and market exclusivity

**Source:** 1. Depression and Other Common Mental Disorders: Global Health Estimates and Cleare, A. et al - 2015 -Evidence-based guidelines for treating depressive disorders with antidepressants: A revision of the 2008 British Association for Psychopharmacology guidelines. These sources state that 1/3 of those suffering with major depressive disorder (MDD) are estimated to be TRD. Therefore, we approximated 100 million from 320 million people with MDD 2. Halberstadt and Geyer - 2011

# Transforming the patient experience in mental health care

Our vision  
A world of mental wellbeing

FDA Breakthrough  
Therapy designation  
for COMP360 in TRD;  
New indications and  
compounds in  
development




Health systems and  
payer partnerships  
Value-based models,  
real-world evidence



Innovative care delivery models  
Centres of Excellence,  
digital technologies

# TRD treatment pathway: significant unmet need for 100 million patients

Treatment pathway stage	New onset depression Major depressive disorder (MDD)	Persistent depression Major depressive disorder (MDD)	Treatment-resistant depression (TRD)
Line of therapy	<div> <div>First line</div> <div>Second line</div> <div>Third line + </div> </div>		
Estimated no of patients (worldwide)	<b>320 million</b>	<b>200 million</b>	<b>100 million (~1 in 3 of total)</b> <b>US healthcare cost approx \$17-25k per patient/year</b>
Available treatments	<ul style="list-style-type: none"> <li>• Antidepressants</li> <li>• Psychological interventions, eg CBT*</li> </ul>	<ul style="list-style-type: none"> <li>• Antidepressants</li> <li>• Antidepressant combinations</li> <li>• Psychological interventions</li> </ul>	<ul style="list-style-type: none"> <li>• Antidepressants</li> <li>• Augmentation therapy (antidepressants, mood stabilisers, anticonvulsants, atypical antipsychotics, esketamine)</li> <li>• Ketamine</li> <li>• Somatic therapy (rTMS*, tDCS*, ECT*, DBS*)</li> <li>• High-intensity psychological interventions</li> </ul>
% relapse	<b>60-70%</b>	<b>50-75%</b>	<b>80-90%</b>

**Note:** \*CBT = cognitive behavioural therapy; rTMS = repetitive transcranial magnetic stimulation; tDCS=transcranial direct current stimulation; ECT=electroconvulsive therapy; DBS=deep brain stimulation

**Source:** Hasler et al, 2004 - Acute psychological and physiological effects of psilocybin in healthy humans: a double-blind, placebo-controlled dose effect study



# Our COMP360 psilocybin therapy



## COMP360 (GMP drug substance and drug product)

Synthetic, high-purity, polymorphic crystalline psilocybin formulation

1mg, 5mg and 25mg oral capsule formulation (for Phase III and commercialisation)

Stability testing in place with adequate shelf life for clinical trials/commercialisation

UK CMO manufacturing at commercial scale



## Psychological support

COMP360 is combined with psychological support from specially trained therapists

Psilocybin session is preceded by preparation and followed up with integration

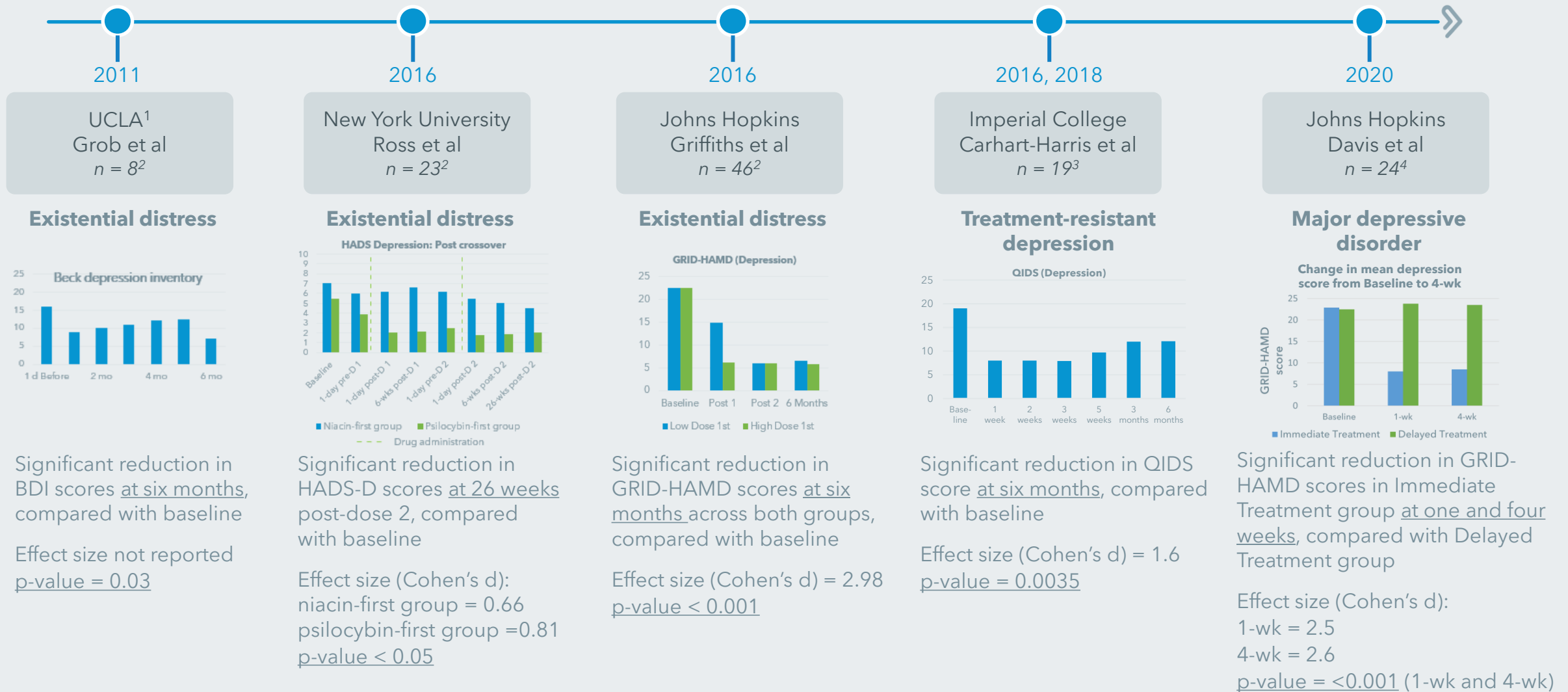


## COMP360 psilocybin therapy: clinical status

- Designated Breakthrough Therapy for TRD in 2018
- Preclinical genotoxicity and cardiotoxicity studies completed
- Phase I trial completed: COMP360 generally well-tolerated in healthy participants (n=89)
- Phase IIb trial in TRD: underway in 22 sites in 10 countries (n=233)



# Clinical signals: early indicators from academic-sponsored trials show rapid reductions in symptoms in TRD and other mental health conditions



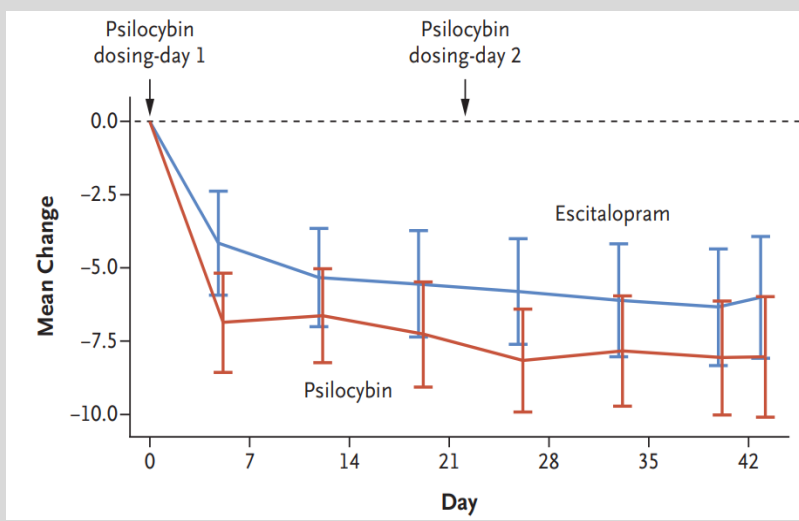
**Note:** 1. UCLA = University of California, Los Angeles; 2. n denotes the number of patients who completed the relevant disclosed timepoint; 3. Denotes the number of patients for whom data is shown in the bar graph. A total of 19 patients completed six months follow-up; 4. Denotes the number of patients who completed both administration sessions and 1-wk and 4-wk post-session visits.

All charts have been recreated from information provided in relevant papers. None of these studies used COMP360



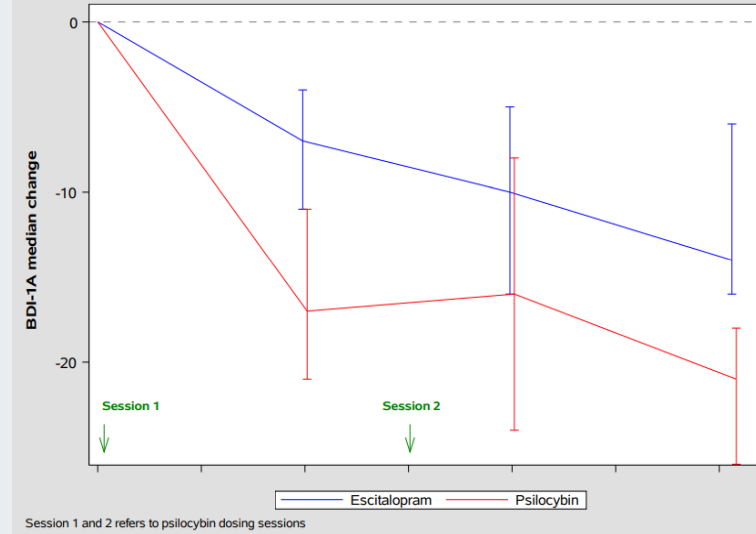
# Exploratory study showing signals of psilocybin's positive activity

**Primary endpoint:**  
Change from baseline on the QIDS-SR-16



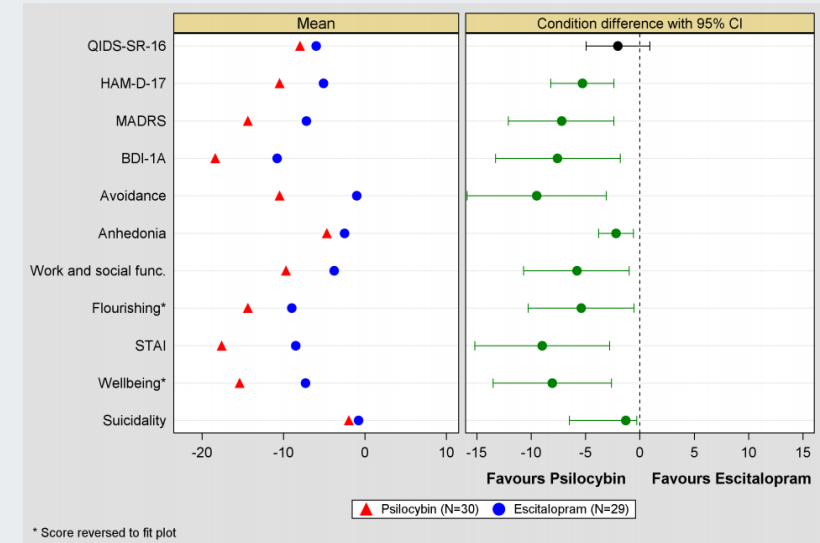
- Primary efficacy measure: the change from baseline in QIDS-SR-16 total score at six weeks showed a two point difference favouring psilocybin compared with escitalopram

**Key secondary endpoint:**  
BDI-1A scores vs time (Median values and 95% CI)



- Secondary measures: positive effects of both psilocybin and escitalopram, with psilocybin showing numerical benefits compared with the SSRI
- Change from baseline at week six on MADRS showed a 7.2 point treatment difference favouring psilocybin; HAM-D-17 showed a 5.3 point treatment difference favouring psilocybin
- Response rates (a 50% or greater reduction on the QIDS-SR-16 total score from baseline) at week six were 70.2% for the psilocybin arm compared with 48.0% for the escitalopram arm, and remission rates (defined as a QIDS-SR-16 total score  $\leq 5$ ) at week six were 57.1% and 29.1%, respectively

**All efficacy outcomes at week six**



- Phase II, double-blind, randomised, controlled trial involving patients with major depressive disorder (MDD)
- N=59; comparing psilocybin with escitalopram (1:1 randomisation) over a 6-week period
- Psilocybin arm received two doses of 25mg psilocybin three weeks apart with psychological support
- The study was not powered to detect superiority between psilocybin or escitalopram for the primary endpoint
- COMP360 psilocybin was generally well-tolerated with no serious adverse events
- Study concludes that psilocybin findings should be explored further in larger studies



# Psilocybin therapy: potential benefits for patients, clinicians and payers

## Potential patient benefits

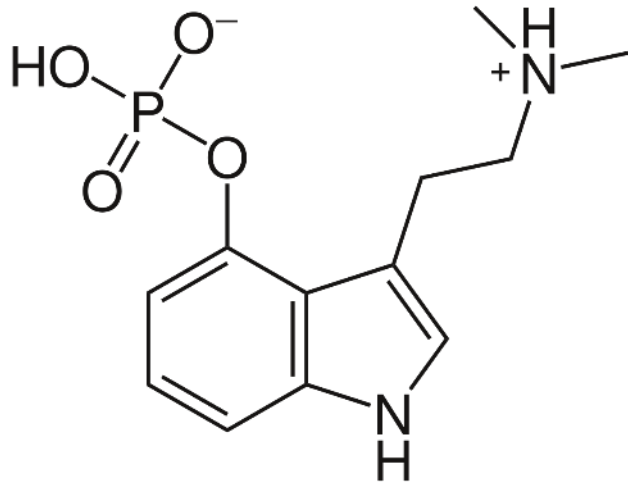
- Rapid and sustained relief
- A meaningful patient experience
- A sense of agency and empowerment

## Potential economic benefits

- Reduction in total cost of care
- Lower healthcare resource utilisation
- Increased productivity, reduced absenteeism



# Psilocybin is a psychoactive substance



Psilocybin molecule



An active ingredient in some species of mushrooms

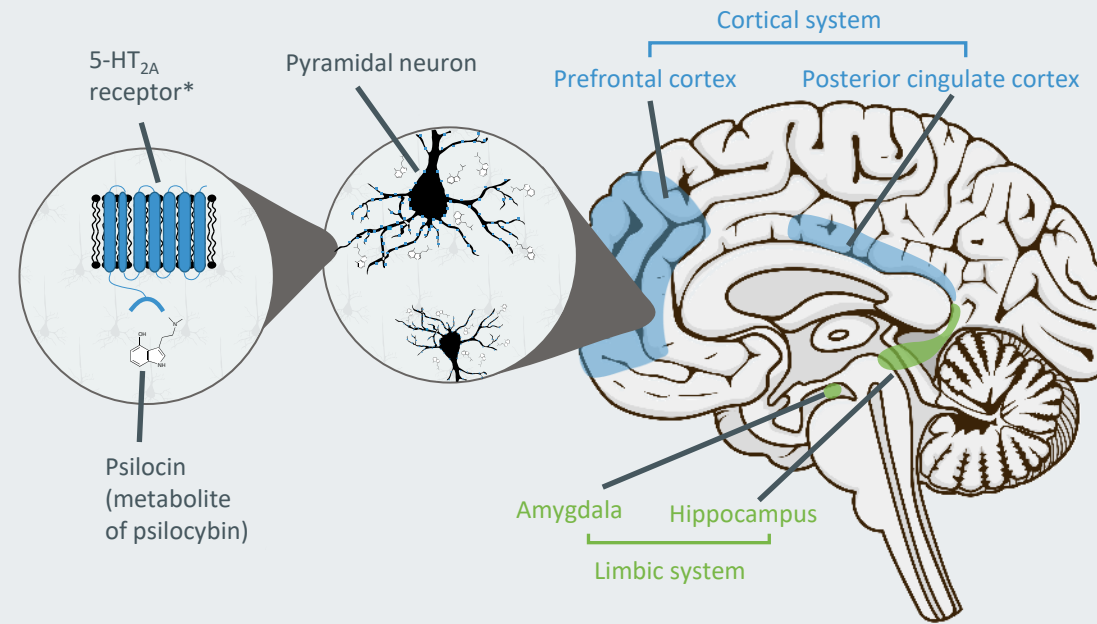


Established knowledge of subjective effects



A generally well-tolerated serotonergic psychedelic

# COMP360 mechanism of action



## Modulation of cortical and limbic systems via 5-HT<sub>2A</sub> receptors

1. Stimulation of 5-HT<sub>2A</sub> receptors<sup>1</sup> results in downstream cascades via G-protein signalling<sup>2</sup>

2. Altered extracellular release of dopamine<sup>3,4</sup> and leading to enhanced positive mood

3. Downregulation of the default mode network, or DMN<sup>5</sup>, and de-synchronisation of cortical activity as well as the emergence of new patterns of functional connectivity across the brain<sup>6</sup>

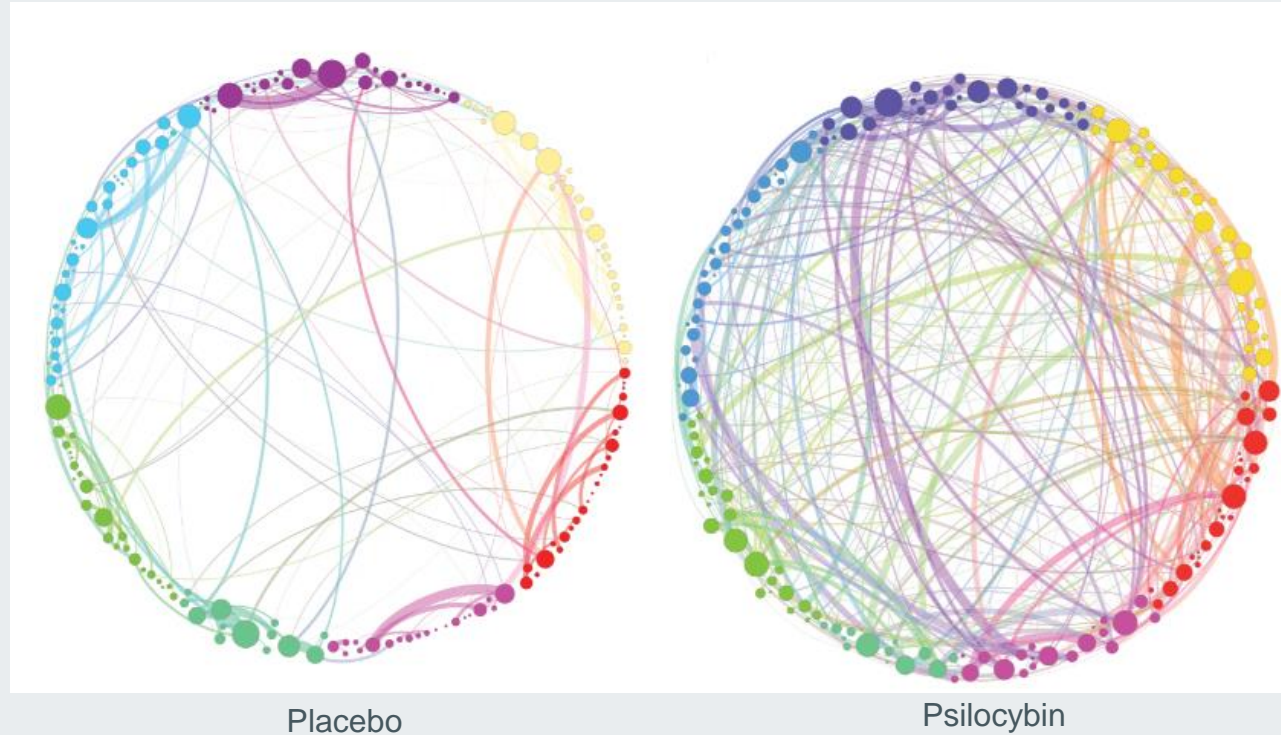
4. Sustained cellular changes leading to neuroplasticity<sup>7</sup> and "window of opportunity" for therapy

**Note:** \*5-HT<sub>2A</sub> = 5-hydroxytryptamine 2A; DMN = default mode network; mPFC = medial prefrontal cortex

**Source:** 1. Halberstadt et al (2011); 2. Lopez-Gimenez et al (2018); 3. Vollenweider et al (1999); 4. Sakashita et al (2015); 5. Carhart-Harris et al (2012a); 6. Petri (2014); 7. Ly et al (2018)



# Simplified visualisation of the acute changes in brain network connectivity



Brain network alterations may indicate the emergence of novel patterns of connectivity, following downregulation of the DMN

**Note:** Figure adapted from *Petri et al, 2014*; study analysed fMRI (functional magnetic resonance imaging) data from healthy volunteers to compare resting-state functional brain connectivity after intravenous infusion of placebo and psilocybin

**Source:** Petri, 2014 - Homological scaffolds of brain functional networks

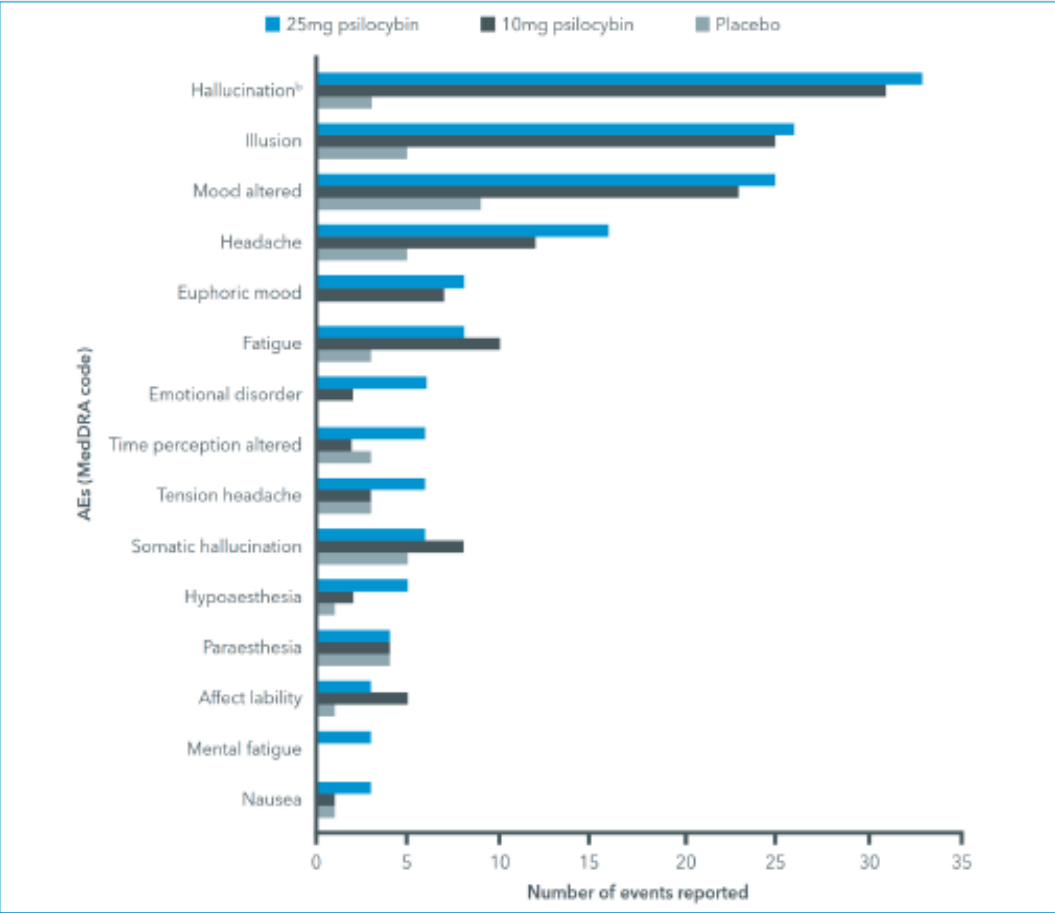
# Phase I safety and feasibility trial – data published in December 2019

- Largest randomised controlled study of psilocybin completed, in 89 healthy volunteers
- COMP360 psilocybin was generally well-tolerated with no serious adverse events
- No clinically-relevant negative effects on cognitive and emotional functioning
- Feasibility of simultaneous administration to up to six people, with 1:1 support
- Clinical training for phase IIb trial therapists



# COMP360 induced psychedelic experiences that correlate with therapeutic effect

Most frequently reported AEs\* (MedDRA Code)<sup>a</sup> in our Phase I trial with healthy volunteers



a. Ranked by incidence in the 25mg psilocybin group  
b. Includes auditory, gustatory, olfactory, tactile and visual hallucinations

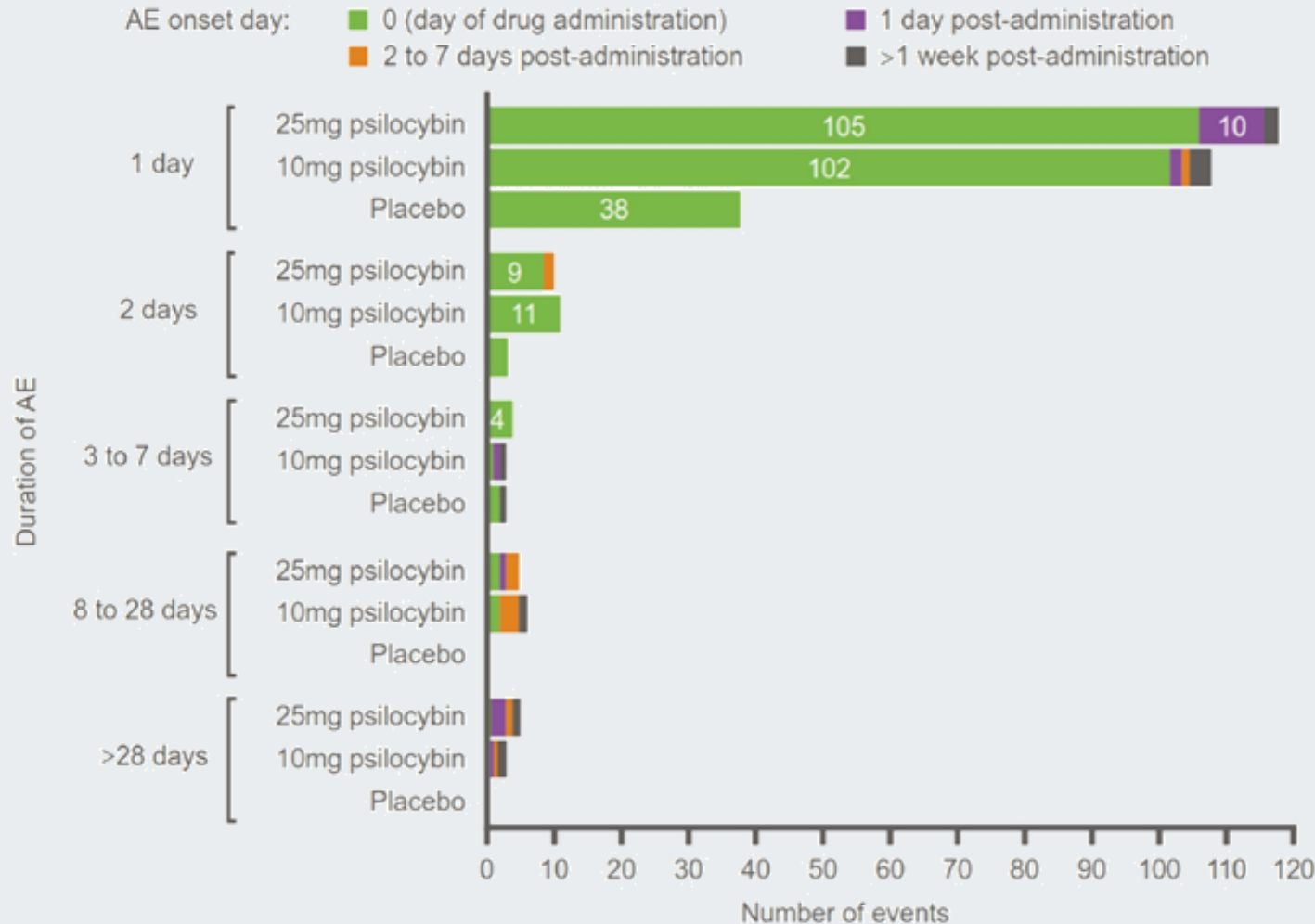
Mood altered AEs ranked by incidence in the 25mg psilocybin group

	25mg COMP360 (n=30)	10mg COMP360 (n=30)	Placebo (n=29)
Any "mood altered" AE	15 (50.0)	13 (43.3)	6 (20.7)
Introspection	7 (23.3)	5 (6.7)	1 (3.4)
Reflections	3 (10.0)	2 (6.7)	2 (6.9)
Increased empathy	2 (6.7)	3 (10.0)	0
Sense of oneness	1 (3.3)	4 (13.3)	0
Introspection/reflection	1 (3.3)	1 (3.3)	1 (3.4)
Laughter	1 (3.3)	1 (3.3)	0
New perspective	1 (3.3)	1 (3.3)	0
Awareness of importance of considering others	1 (3.3)	0	0
Clarity of thought	1 (3.3)	0	0
Contemplative state	1 (3.3)	0	1 (3.4)
Increased compassion	1 (3.3)	0	0
Increased creativity	1 (3.3)	0	0
Increased sense of connectedness	1 (3.3)	0	0
More socially upbeat	1 (3.3)	0	0
Reflections and new perspectives	1 (3.3)	0	0
Sense of oneness and connectedness	1 (3.3)	0	0
Being less judgmental	0	1 (3.3)	0
Feeling more moody/sensitive	0	1 (3.3)	0
Feeling rested	0	1 (3.3)	0
Increased wit	0	1 (3.3)	0
Reflections and new perspective on relationships and society	0	1 (3.3)	0
Sense of oneness	0	1 (3.3)	0
Calm	0	0	1 (3.4)
Feeling of adrenaline release	0	0	1 (3.4)
Negative mood	0	0	1 (3.4)
Unusual appreciation of music	0	0	1 (3.4)

**Note:** \*AE = adverse event; MedDRA = Medical Dictionary for Regulatory Activities

# Majority of adverse events resolved on day of administration, with a median duration of one day

## Most frequent AEs: onset and duration by treatment arm in our Phase I trial



✓ Of all AEs, 68% reported as starting and resolving on the day of administration

✓ The median duration of AEs in all treatment arms across the 12-week trial was one day



# Psilocybin therapy: described by most patients in one study as being among the top five most meaningful experiences of their lives<sup>1</sup>



## Preparation

- Establish therapeutic alliance
- Demonstrate and practise self-directed inquiry and experiential processing
- Online preparation platform to remind patients what to expect and how to prepare



## Psilocybin session

- Supported by therapist and assisting therapist throughout 6-8 hour session
- Room designed for non-clinical, calming atmosphere
- Specially-designed music playlist, eyeshades to help focus internally
- Patients often experience sense of connectedness, emotional breakthrough and acceptance



## Integration

- Therapists help patients process the emotional and physical experiences facilitated by psilocybin
- Generate insights that can lead to cognitive and behavioural changes
- Patients often experience a sense of agency and a separation from their symptoms, and report feeling empowered to make changes in their lives

technology application solutions



# Developing and researching technology applications to improve the safety, efficacy and accessibility of our therapy

## COMPASS solutions in development

Patient preparation platform

Online therapist training and learning platform

AI-assisted therapist feedback and monitoring

## Research

Analyse digital biomarker data with the goal of predicting relapse and modelling disease course

Develop technologies to augment or complement our therapies

## Building a strong in-house team



**Greg Ryslik** - SVP Data Science, Machine Learning and Digital Health Research

- Former Chief Data Officer at Celsius Therapeutics; VP of Data Science at Mindstrong Health; Service Data Science Lead at Tesla Motors



**Bob Dougherty** - VP, Digital Health Research

- Former VP of Research at Mindstrong Health; Research Director at the Stanford Center for Neurobiological Imaging
- Published 50+ peer-reviewed articles in psychology and neuroscience

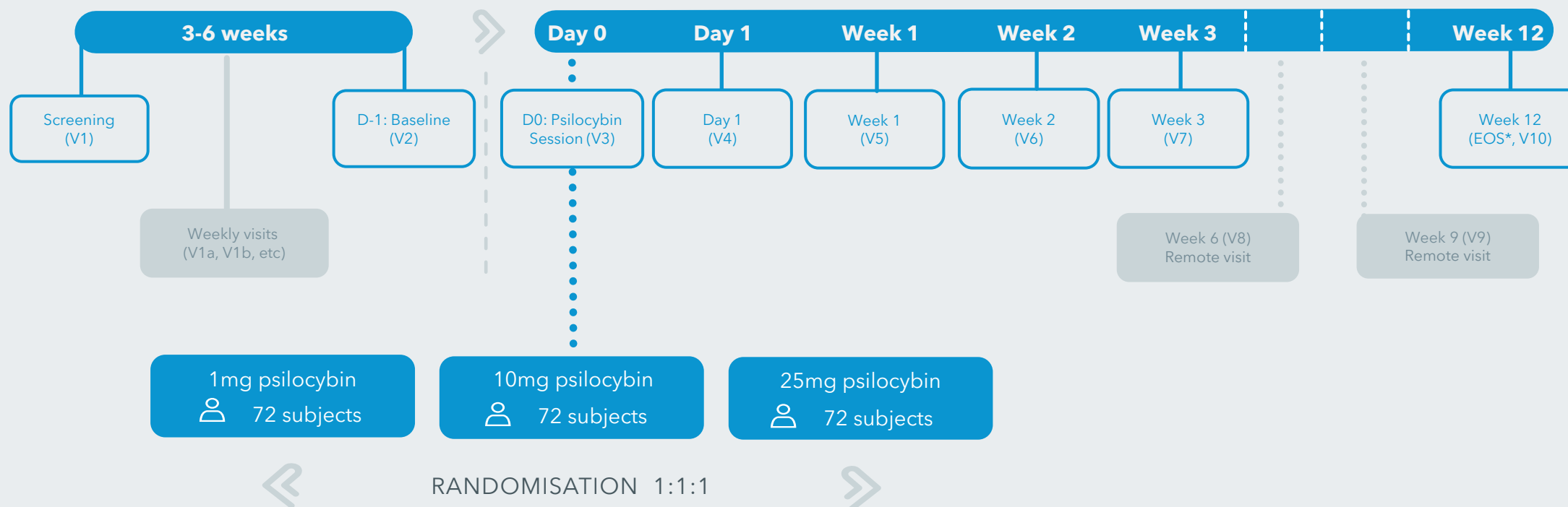


# Phase IIb clinical trial: COMP360 psilocybin therapy for TRD

Target enrolment of 216 patients achieved (actual n=233); data expected late 2021

## Primary endpoint (to determine phase III dose)

✧ Reduction of symptoms of depression as measured by MADRS\* from baseline to 3 weeks



## Additional endpoints (to determine phase III participants)

- ✧ Proportion of participants with response ( $\geq 50\%$  decrease in MADRS from baseline) at 3 weeks
- ✧ Proportion of participants with remission ( $\text{MADRS} \leq 10$ ) at 3 weeks
- ✧ Proportion of responders who maintained  $\geq 50\%$  improvement in MADRS up to week 12 (durability of effect)
- ✧ Additional exploratory endpoints include: digital markers, quality of life, functional impairment, cognition, anxiety

**Note:** \*MADRS = Montgomery-Åsberg depression rating scale; EOS = end of study; TRD = treatment-resistant depression

To date, five patients have experienced suspected, unexpected serious adverse reactions (SUSARs) in our phase IIb trial for TRD patients

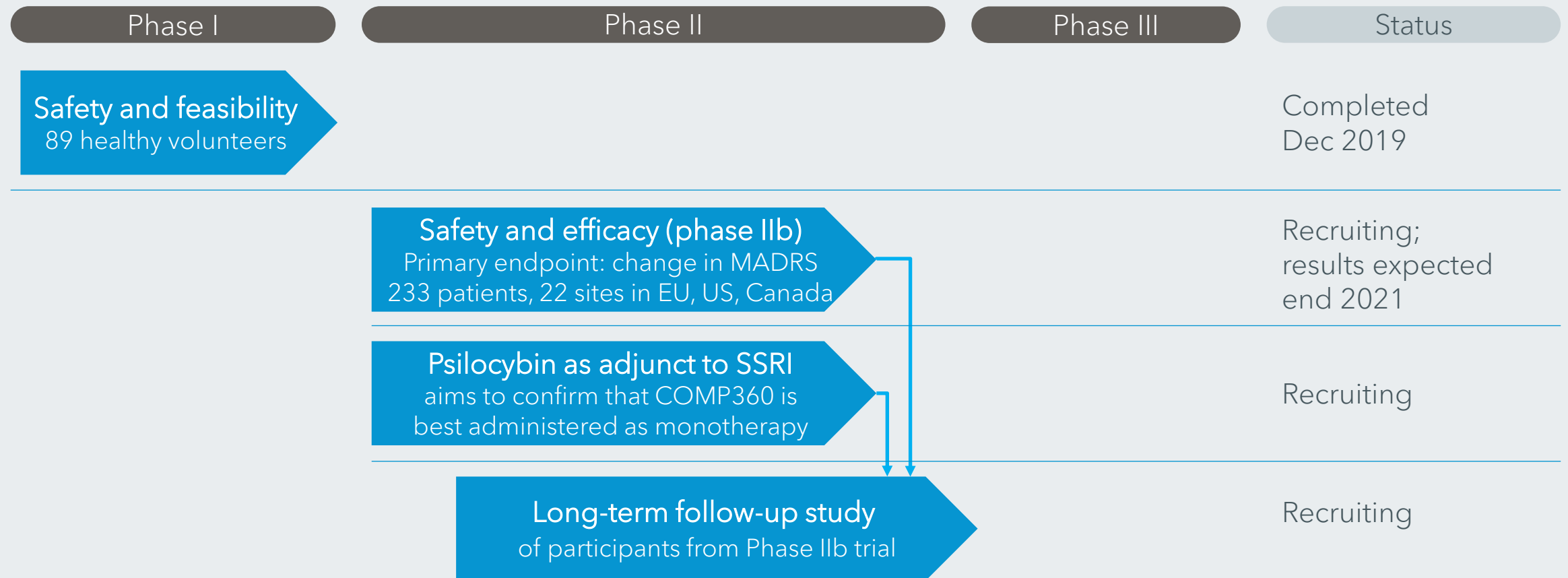
# Sites engaged for phase IIb TRD study are well established and have access to significant patient populations





# Our clinical development programme for COMP360 psilocybin therapy in TRD

## Getting ready for Phase III



# Achieving broad patient access



## Comprehensive and payer-relevant evidence generation plan

- Early scientific advice with key payer-experts and HTAb\*
- US reimbursement and coding strategy
- Real-world evidence - data access agreements



## Differentiated and modular commercial offering

- Therapist training services and partnerships
- Treatment centre activation services
- Digital solutions – companion apps for prediction and prevention



## Strategic partnerships with payers, health systems and clinic networks

- Centres of Excellence
- Prospective payer-focused trials
- Potential franchise model

Prototype design Centre of Excellence  
treatment room



Prototype design Centre of Excellence  
post-treatment space





# COMP360 commercial exclusivity strategy

## Regulatory strategy



## Patent strategy

### COMP360 can be registered as NCE\*/NAS\*

- Possibility of full patent and regulatory exclusivity
- Data protection, up to
  - 8-11 years (EU)
  - 5-7.5 years (US)

### Reschedule COMP360 psilocybin

- Upon approval by FDA, COMP360 psilocybin could be rescheduled by DEA

### Three US patents granted

- 1<sup>st</sup> US patent (Dec 2019): includes claims to methods of treating drug-resistant depression with high-purity polymorphic crystalline psilocybin formulations
  - Petition for Post Grant Review was dismissed on merits in August 2020
- 2<sup>nd</sup> US patent (March 2021): includes claims to oral dosage forms of psilocybin and methods of treating major depressive disorder (MDD) with those forms
- 3<sup>rd</sup> US patent (March 2021): includes claims to high-purity crystalline psilocybin (including the form used in COMP360), formulations of psilocybin and methods of treating MDD with psilocybin

### European & Asian patents granted/registered

- German utility model (March 2020): includes claims to forms of crystalline psilocybin, use in medicine and methods of synthesis
- First UK patent (May 2020): includes claims to manufacturing methods, product-by-process and formulations
- Second UK patent (July 2020): includes claims covering crystalline psilocybin, pharmaceutical formulations, medical uses and manufacturing methods
- Two Hong Kong patents granted (Feb 2021) covering crystalline psilocybin compositions, formulations and manufacturing methods (corresponds to above UK patents)

### Multiple related applications pending

- Pursue additional claim scope and extend coverage in over 20 additional countries/regions












### Three PCT applications and Taiwanese application pending

- Additional formulations, methods of administration, therapeutic and digital supports, combination treatments, methods of treatment for a variety of additional indications

# COMP360 in psilocybin therapy research

IISs using COMP360: signal-generating, exploratory studies looking at indications in areas of unmet need

- COMPASS has pending patent applications that include the indications listed
- COMPASS owns or has a license to new IP generated
- Studies may provide signals that we can explore further and expand in a portfolio approach to different indications

MDD comparative mechanism of action	Imperial College London	
MDD	University of Zurich	
	Aquilino Cancer Center	
Chronic cluster headache	University of Copenhagen	
Severe TRD	Sheppard Pratt	
Bipolar disorder II	Sheppard Pratt	
Body dysmorphic disorder	Columbia University	
Anorexia nervosa	UC San Diego	
TRD	King's College London	
Suicidal ideation	Sheppard Pratt	
Autism	King's College London	

**Note:** IIS = investigator-initiated studies, MDD = major depressive disorder, TRD = treatment-resistant depression

We do not sponsor investigator-initiated studies, some of which use their own protocols and study design. We encourage the open publication of all associated findings from any study or trial using COMP360

© COMPASS Pathways 2021



# Working in partnership



COMPASS's first  
Centre of Excellence, at  
Sheppard Pratt,  
Baltimore, US



COMPASS Discovery Center  
with University of the Sciences,  
Philadelphia,  
UC San Diego, School of  
Medicine, and Medical  
College of Wisconsin (MCW)



COMP360 psilocybin therapy  
study of MDD in cancer, at the  
Aquilino Cancer Center, Rockville,  
Maryland, US



IIS signal-generating studies  
in new indications for  
psilocybin therapy using  
COMP360

# Comprehensive preclinical program - COMP360 psilocybin in a broad range of indications with pending patent applications

Preclinical research has been conducted in the following indication areas:

Alzheimer's disease

Autistic spectrum disorder

Chronic pain

Epilepsy

Inflammation

Parkinson's disease

Attention deficit hyperactivity disorder

Binge eating disorder

Cluster headache

Generalised anxiety disorder

Obsessive-compulsive disorder

Sleep wake disorders

We believe the data from the above programme of research is supportive of performing preclinical research into the following additional indications:

Anorexia nervosa

Bulimia nervosa

Inflammatory bowel disease

Panic disorder

Post-traumatic stress disorder

Stroke

Body dysmorphic disorder

Fibromyalgia

Migraine

Post-partum depression

Social anxiety disorder

Traumatic brain injury

# Financial overview

Cash and cash equivalents at 30 June 2021

- \$316.3 million

Issued shares

- 41.7 million<sup>1</sup>

Covering analysts

- Esther Hong, Berenberg
- Robert (Bert) Hazlett, BTIG
- Sumant Kulkarni, Canaccord Genuity
- Charles Duncan, Cantor Fitzgerald
- Neena Bitritto-Garg, CITI
- Ritu Baral, Cowen
- Josh Schimmer, EvercoreISI
- Patrick Trucchio, HC Wainwright & Co
- Jason McCarthy, Maxim Group
- Elemer Piros, ROTH

## Notes:

1. As at June 30, 2021



# Pioneering the development of a new model of psilocybin therapy

## Key achievements

- ✓ \$146.6m raised in September IPO; \$80m raised in Series B
- ✓ Breakthrough Therapy designation for COMP360 in TRD
- ✓ Phase I healthy volunteers trial completed
- ✓ Phase IIb clinical trial making steady progress
- ✓ Patent awards in US, UK, Germany
- ✓ Experienced leadership team, board of directors, scientific advisory board; leadership team and board strengthened with recent hires
- ✓ Preclinical studies in new indications; Discovery Center launched
- ✓ Additional trials underway in TRD programme
- ✓ COMP360 used in multiple IISs exploring range of indications
- ✓ FDA approved request for 1:1 therapist patient ratio and online therapist training
- ✓ Aquilino Cancer Center launches psilocybin therapy study with simultaneous administration and 1:1 therapist support

## 2021 Anticipated milestones

- ✓ Establish first Centre of Excellence
- ✓ Expand Board of Directors with Independent director
- ✓ Data published from IISs using COMP360
- ✓ Expand current IP portfolio with additional patent grants
- ✓ Further senior appointments
- Phase IIb trial: data expected late 2021
- Further partnerships and collaborations
- Evolve data and technology strategy

“

*I had such instant relief I could  
make up my mind about things ...  
it lifted the fog of depression.  
The way I felt after, I have not felt  
with any medicine or therapy ...  
I forgot what depression was.*

”

Quote from participant in Imperial College London psilocybin therapy study conducted by Carhart-Harris et al, 2016; image is representative and not of a patient





Stephen Schultz  
SVP, Investor Relations  
[stephen.schultz@compasspathways.com](mailto:stephen.schultz@compasspathways.com)  
+1 401-290-7324

